

65W LED Driver Constant current

EHP065CXXXMSR



■ Approve



■ Features

- Class I, Built-in
- Input Voltage 220-240VAC
- Protections: SCP/OLP/OVP
- Power Factor >0.9
- Efficiency ≥88%
- Non-Isolated design
- 5 years warranty

■ Applications(Typ.)

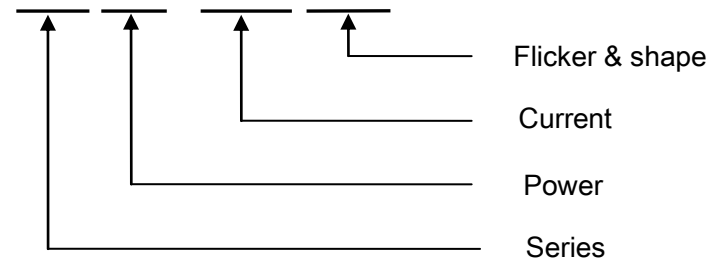
- Linear light

■ Description

EHP065CXXXMSR is a non-Isolated 65W constant current LED driver that operates from 176-264Vac input with 350 to 1050mA output current. With it's compact dimensions from 280 x 30 x 22mm it is easy to integrate in linear light products. To ensure trouble-free operation, protection is provided against output short circuit and over Load.

■ Model code

EHP065C0700MSR



65W LED Driver Constant current

EHP065CXXXMSR

■ Specification

Input	Rated input voltage	220-240Vac				
	Range of input voltage	176-264Vac				
	Frequency(Hz)	50/60 Hz				
	Power Factor	> 0.9@220-240Vac				
	Input Current max	0.5A MAX. @Full Load,176Vac				
	Start-up time	< 0.5S				
	Unload Power Consumption	≤0.5W				
	Inrush Current	30A Max.				
	THD	15% Typ.				
	Leakage Current	< 0.5mA(240VAC)				
Output	Constant Current Max. *Note.3	350mA	700mA	900mA	...	1050mA
	Unload voltage Max. (VDC)	200V	110V	90V	...	80V
	Voltage Range(VDC)	111.5-187.5V	55.5-93V	43.5-72.5V	...	40-62V
	Rated power	65.6W Max.	65.1W Max.	65.3W Max.	...	65.1W Max.
	Current Accuracy	±5%@220-240Vac				
	Voltage Regulation	±5% @Full Load, 220-240Vac				
	Load Regulation	±5%@220-240Vac				
	Hold-up Time	1s max.@Full Load				
	Ripple& Noise *Note.2	≤±20% @Full Load,240VAC				
	Efficiency(Typ.)	≥88%				
Protection	Over Load Protection	103-120%				
		Protection type: Auto Resume				
	Over Voltage Protection	> 200VDC	> 110VDC	> 90VDC	...	> 80VDC
	Protection type: Auto Resume					
	Short circuit Protection	Protection type: Auto Resume				
Environment	Operating Temperature	-10°C...+50°C				
	tc	85°C				
	Storage Temperature	-20°C...+60°C				
	Life time	>30,000H@ta=50°C				
	Humidity	10%-90%RH				
Others	Dimension	280X30X22(LXWXH)mm				
Safety & EMC	Safety standards	EN 61347-1; EN61347-2-13;				
	Withstand voltage	Input-FG : 1500V/5mA/1min				
	Isolation resistance	Input-FG : ≥2MΩ@500VDC				
	EMI	EN55015; EN61000-3-2 Class C; EN61000-3-3				
	EMS	EN 61547; EN 61000-4-2; EN 61000-4-5 —L-N: 1KV, L/N-PE: 2KV				
Note	1.All parameters NOT specially mentioned are measured at 240VAC input, full load and 25°C of ambient temperature. 2.Ripple & Noise are measured at 20MHz of bandwidth by using a 300mm twisted pair-wire terminated with a 0.1uF & 47 uF parallel capacitor. 3.Output current can be from 350mA to 1050mA and increasing in multiples of 50mA. Please see Model list below and contact EAGLERISE for details.					

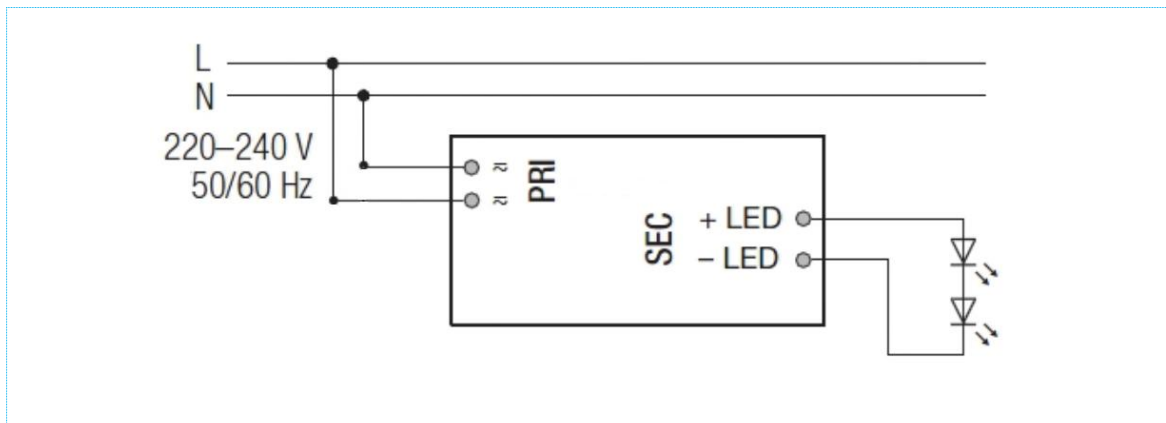
65W LED Driver Constant current

EHP065CXXXMSR

Model list

Model number	Input			Output			Max. Prated(W)
	Voltage (VAC)	Max.Current (A)	Frequency (Hz)	Constant current (mA)	Normal working voltage (VDC)	No load working voltage (VDC)	
EHP065C0350MSR	220-240	0.5	50/60	350	111.5-187.5	200	65.6
EHP065C0400MSR	220-240	0.5	50/60	400	97.5-162.5	180	65
EHP065C0450MSR	220-240	0.5	50/60	450	86.5-144.5	160	65
EHP065C0500MSR	220-240	0.5	50/60	500	78-130	150	65
EHP065C0550MSR	220-240	0.5	50/60	550	71-118.5	130	65.2
EHP065C0600MSR	220-240	0.5	50/60	600	65-108.5	120	65.1
EHP065C0650MSR	220-240	0.5	50/60	650	60-100	120	65
EHP065C0700MSR	220-240	0.5	50/60	700	55.5-93	110	65.1
EHP065C0750MSR	220-240	0.5	50/60	750	52-87	110	65.3
EHP065C0800MSR	220-240	0.5	50/60	800	48.5-81.5	100	65.2
EHP065C0850MSR	220-240	0.5	50/60	850	45.5-76.5	90	65
EHP065C0900MSR	220-240	0.5	50/60	900	43.5-72.5	90	65.3
EHP065C0950MSR	220-240	0.5	50/60	950	41-68.5	90	65.1
EHP065C1000MSR	220-240	0.5	50/60	1000	39-65	80	65
EHP065C1050MSR	220-240	0.5	50/60	1050	40-62	80	65.1

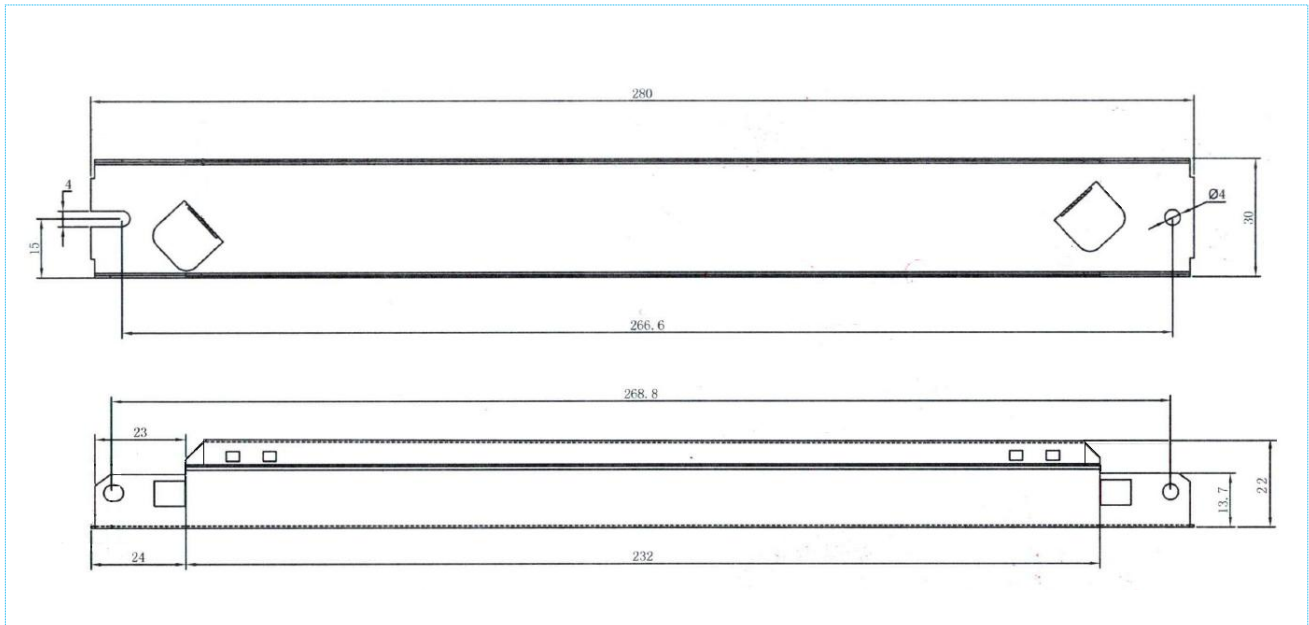
Wiring diagram



65W LED Driver Constant current

EHP065CXXXMSR

■2D diagram



■Operating window

