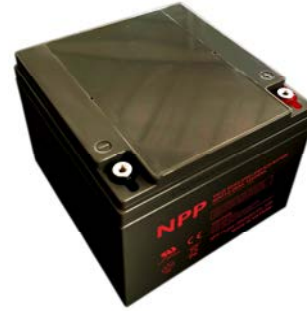


NPD12-26Ah 12V26Ah

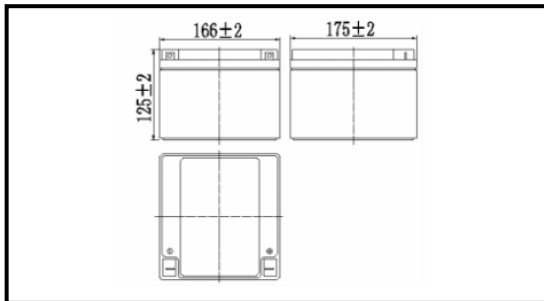
Valve Regulated Lead Acid Battery



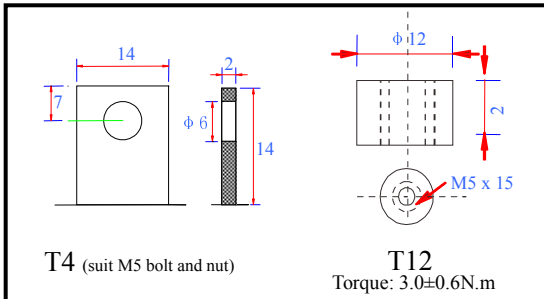
Specifications

| | | |
|-----------------------|------------------------|--------------------|
| Nominal voltage | 12V (6 cells per unit) | |
| Rated capacity (20HR) | 26Ah/10.5V | |
| Dimensions | Length | 166±2mm (6.54inch) |
| | Width | 175±2mm (6.89inch) |
| | Height | 125±2mm (4.92inch) |
| | Total height | 125±2mm (4.92inch) |
| Approx. weight | 8.20kg (18.07lbs)±4% | |

Outer dimensions (mm)



Terminal type (mm)



Characteristics

| | | |
|---|--|--|
| Capacity (25°C) | 20HR (10.5V) | 26Ah |
| | 10HR (10.5V) | 24Ah |
| | 1HR (9.60V) | 16Ah |
| Terminal type | | T4/T12 |
| Internal resistance (Fully charged, 25°C) | | Approx. 12mΩ |
| Capacity affected by temperature (10HR) | 40°C | 102% |
| | 25°C | 100% |
| | 0°C | 85% |
| | -15°C | 65% |
| Self-discharge (25°C) | 3 months | Remaining capacity: 91% |
| | 6 months | Remaining capacity: 82% |
| | 12 months | Remaining capacity: 65% |
| Nominal operating temperature | | 25°C±3°C (77°F±5°F) |
| Operating temperature range | Discharge | -15°C~50°C (5°F~122°F) |
| | Charge | -10°C~50°C (14°F~122°F) |
| | Storage | -20°C~50°C (-4°F~122°F) |
| Float charging voltage (25°C) | | 13.60 to 13.80V Temperature compensation: -18mV/°C/Block |
| Cyclic charging voltage (25°C) | | 14.50 to 15.00V Temperature compensation: -30mV/°C/Block |
| Maximum charging current | | 7.8A |
| Maximum discharge current | | 360A (5 sec.) |
| Design life | 8 years for floating (25°C) | |
| | Eurobat (20°C): 6-9 years, general purpose | |

Construction

| Component | Positive plate | Negative plate | Container | Cover | Separator | Electrolyte | Safety valve | Terminal |
|--------------|----------------|----------------|-----------|-------|-----------|---------------|--------------|----------|
| Raw material | Lead dioxide | Lead | ABS | ABS | AGM | Sulfuric acid | Rubber | Copper |

Constant current discharge characteristics unit: Ampere/Block (at 25°C, 77°F)

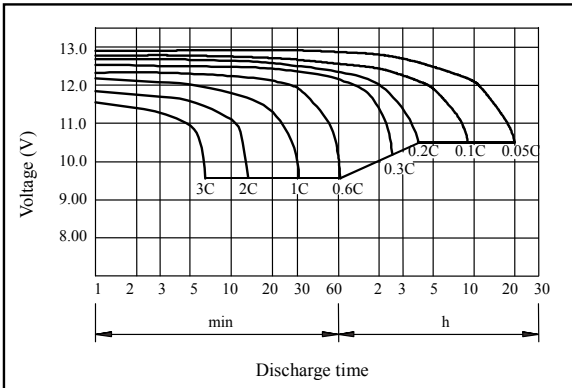
| F.V/Time | 5min | 10min | 15min | 30min | 60min | 2h | 3h | 4h | 5h | 10h | 20h |
|----------|------|-------|-------|-------|-------|------|------|------|------|------|------|
| 9.60V | 97.3 | 61.7 | 48.2 | 27.1 | 16.7 | 9.32 | 6.44 | 5.33 | 4.53 | 2.46 | 1.32 |
| 9.90V | 94.4 | 59.8 | 47.0 | 26.6 | 16.4 | 9.26 | 6.41 | 5.30 | 4.51 | 2.45 | 1.31 |
| 10.2V | 90.5 | 57.3 | 45.3 | 25.8 | 16.0 | 9.18 | 6.36 | 5.26 | 4.48 | 2.44 | 1.31 |
| 10.5V | 86.6 | 54.9 | 43.7 | 25.2 | 15.7 | 9.04 | 6.32 | 5.23 | 4.45 | 2.43 | 1.30 |
| 10.8V | 81.8 | 51.8 | 41.4 | 24.2 | 15.2 | 8.81 | 6.13 | 5.07 | 4.31 | 2.38 | 1.27 |

Constant power discharge characteristics unit: Watt/Block (at 25°C, 77°F)

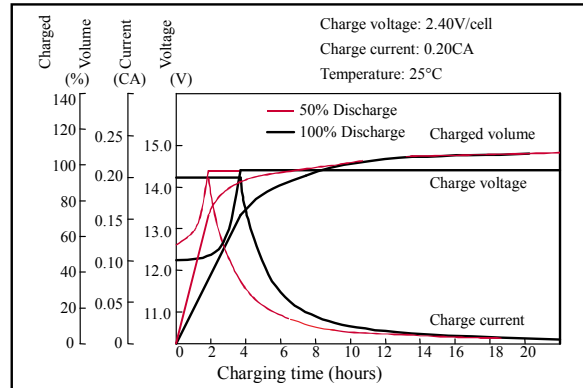
| F.V/Time | 5min | 10min | 15min | 30min | 60min | 2h | 3h | 4h | 5h | 10h | 20h |
|----------|------|-------|-------|-------|-------|-----|------|------|------|------|------|
| 9.60V | 1086 | 696 | 549 | 311 | 193 | 109 | 76.6 | 63.5 | 54.1 | 29.5 | 15.8 |
| 9.90V | 1054 | 675 | 536 | 305 | 190 | 108 | 76.1 | 63.1 | 53.8 | 29.4 | 15.8 |
| 10.2V | 1010 | 647 | 516 | 295 | 186 | 107 | 75.6 | 62.7 | 53.5 | 29.3 | 15.7 |
| 10.5V | 967 | 619 | 498 | 288 | 182 | 106 | 75.1 | 62.2 | 53.1 | 29.1 | 15.6 |
| 10.8V | 912 | 584 | 472 | 278 | 176 | 103 | 72.8 | 60.4 | 51.5 | 28.5 | 15.3 |

Note 1: Above characteristics data can be obtained within three charge and discharge cycles.

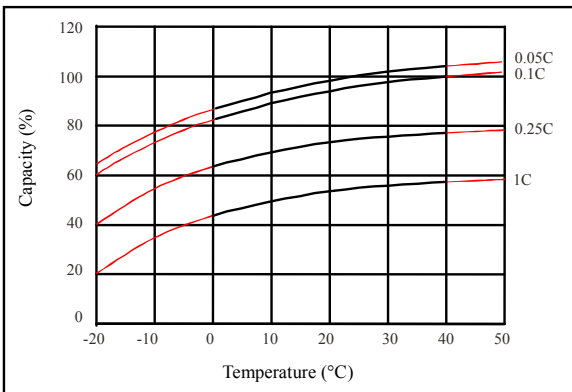
● Discharge characteristics (25°C)



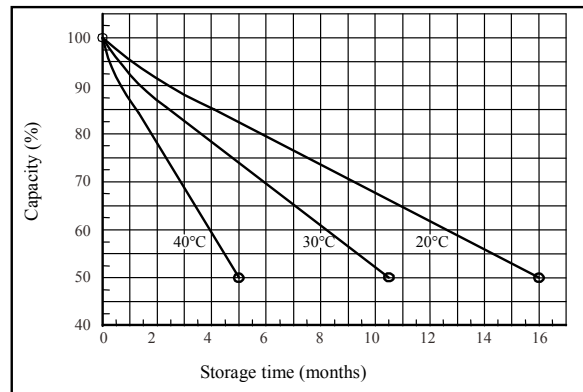
● Charging characteristics (25°C)



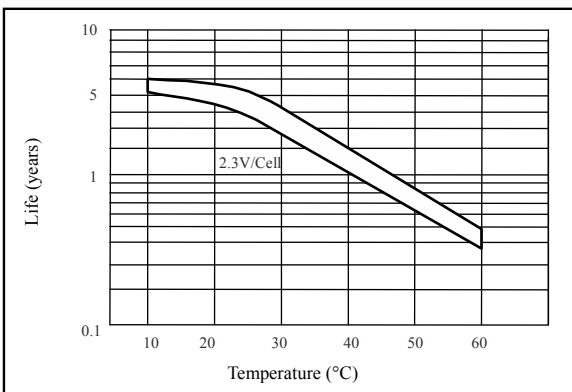
● Temperature effects on capacity



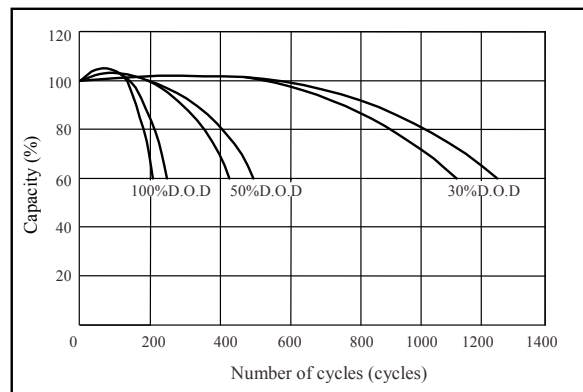
● Self-discharge characteristics



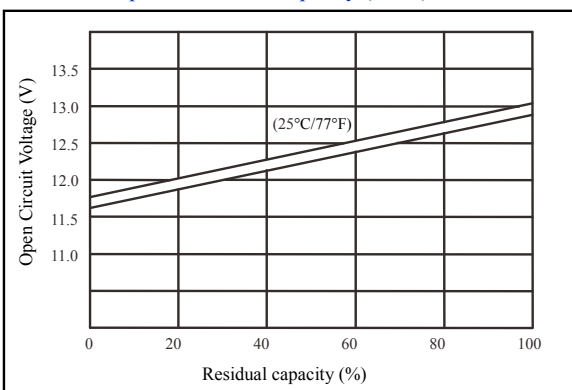
● Floating life on temperature



● Cycle life on D.O.D (25°C)



● Relationship for OCV and capacity (25°C)



● Relationship for charging voltage and temperature

